



www.idealindustries.com
800-435-0705

LanTEK® II Firmware Upgrade Instructions

There are two ways to upgrade the firmware in a LanTEK II certifier; via a computer using the firmware upgrade utility or with a USB thumb drive.

1. The firmware upgrade utility requires the tester to be connected to a PC and is generally the preferred method when several handsets are being upgraded at the same time.
2. The USB thumb drive method does not require a PC and can be easily done in the field.

Requirements:

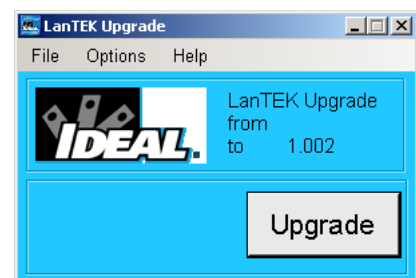
PC Method – Computer running Windows XP or Vista 32 bit operating system, IDEAL DataCenter (IDC) software, IDEAL LanTEK firmware upgrade utility software, USB cable, LanTEK II power supply.

USB Thumb Drive Method – USB thumb drive with LanTEK II firmware file, LanTEK II power supply, 2 RJ-45 LanTEK II test adapters (0012-00-0656 or 0012-00-0629), 1 RJ45 patch cord.

Procedures:

PC Method

1. Install IDEAL DataCENTER onto the PC. This is needed to install the necessary USB drivers onto the host PC.
2. In case the LanTEKII firmware utility has not been installed, install the LanTEK II firmware utility onto the PC and launch the program.
3. Connect the LanTEK II display handset to the PC with the USB cable
4. Turn on the LanTEK II display handset
5. Click the Upgrade button.





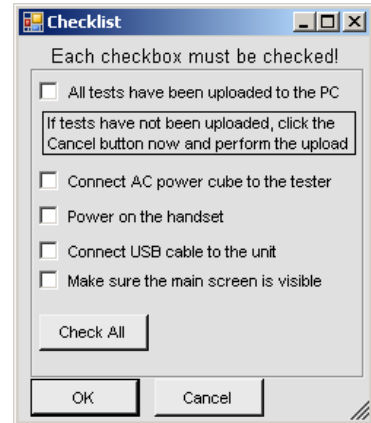
www.idealindustries.com
800-435-0705

- 5 Confirm the correct version will be installed.

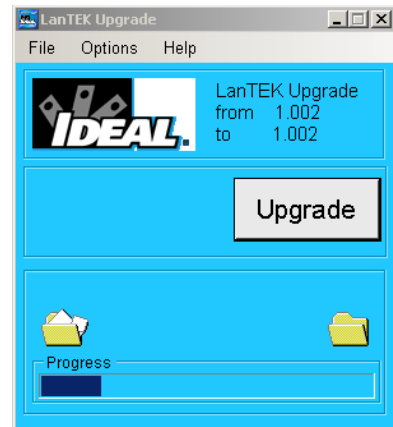
Follow the directions in the upgrade checklist.

Click OK to start the upgrade.

Once started do not disconnect the USB cord or power cable until the upgrade is complete.

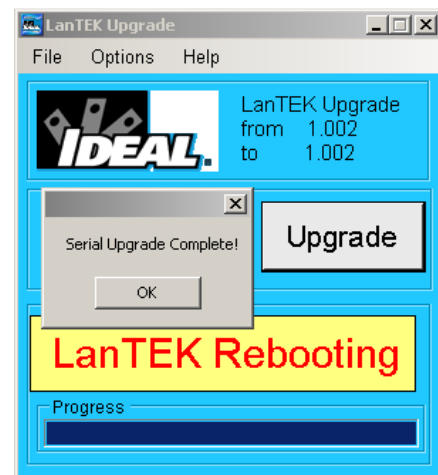


- 6 The upgrade program will copy the new files to the LanTEK II handset, afterwards the handset will reboot and begin installing the new firmware.



- 7 When the upgrade is complete a notification box will appear. Click OK and disconnect the LanTEK II handset.

If an error occurs press and hold the power button on the LanTEK II handset to force a reboot. Repeat the upgrade process.



- 8 To upgrade the remote handset repeat steps 2-7 using the remote handset.

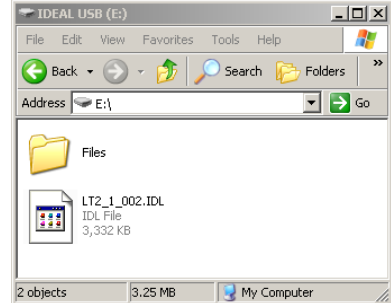


www.idealindustries.com
800-435-0705

USB THUMB DRIVE METHOD

- 1 Copy the LanTEK II firmware file to the root directory of a USB thumb drive. The firmware file will have an ".idl" extension.

In this example the file is called "LT2_1_002.IDL" which is version 1.002 of the LanTEK II firmware.



- 2 Turn the LanTEK II display handset OFF
- 3 Remove the USB drive from the PC and connect to the USB port of the LanTEK II display handset.
- 4 Connect AC power to the LanTEK II display handset.
- 5 Press and release the power button on the LanTEK II display handset THEN IMMEDIATELY Press and HOLD the Escape button on the LanTEK II display handset.
- 6 Continue to hold the Escape button until a small hourglass appears in the upper-right corner of the LanTEK II screen. When the hourglass appears, release the Escape button
- 7 Wait several minutes for the LanTEK II to reboot and install the firmware.

When the Ready screen appears the upgrade is complete.



- 8 Next, upgrade the remote handset.
- 9 Connect the display and remote handsets together using two RJ45 adapters and one RJ45 patch cord, similar to the first step of the field calibration setup.
- 10 Connect AC power to the remote handset and turn the power ON.
- 11 Select the Field Calibration icon on the display handset and press ENTER.

- 12 A message prompting to update the remote handset firmware will appear. Press F1 to proceed with the upgrade.

The remote handset will reboot after the new firmware is installed.

The upgrade process is complete.

